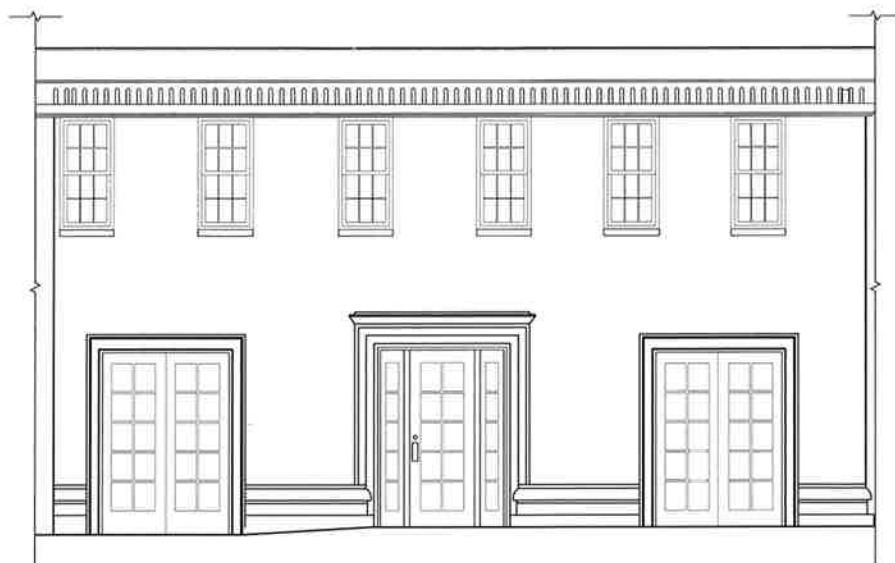




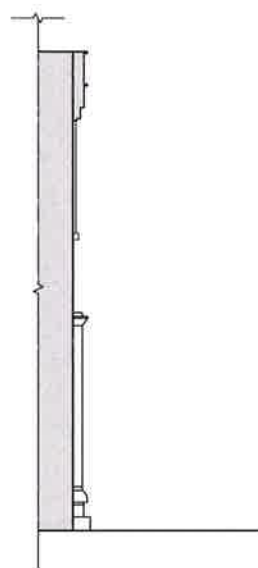
LOFFREDO BROOKS ARCHITECTS P.C.
 118 WEST 22ND STREET - 4TH FLOOR
 NEW YORK CITY, NEW YORK 10011
 TEL 212.679.7729 FAX 212.725.8914
 E.MAIL INFO@LBARCH.COM

NOTES



EXISTING FACADE ELEVATION

1 SCALE: 1/4" = 1'-0"



EXISTING FACADE SIDE ELEVATION

2 SCALE: 1/4" = 1'-0"



EXISTING FACADE SIDE ELEVATION PHOTOS

3 SCALE: NTS



AREA OF WORK

EXISTING FACADE FRONT ELEVATION PHOTO

4



PHOTO EXISTING FACADE

5 SCALE: NTS



PHOTO EXISTING FACADE

6 SCALE: NTS

NO.	DATE	ISSUE/REVISION	BY
-	11.25.15	REVISED LANDMARKS DRAWINGS	CV
-	10.22.15	ISSUE FOR LANDMARKS FILING	CV
-	08.06.15	ISSUE FOR FILING & LANDLORD REVIEW	CV

JOB TITLE
FORBES BUSINESS CENTER
 24 FIFTH AVENUE
 PARTIAL GROUND FLOOR
 NEW YORK, NY 10011

DRAWING TITLE
EXISTING FACADE

SEAL & SIGNATURE	PROJ NO. 5045.00
	DRAWN BY RG/NS
	CHECKED BY ED
	PROJ MGR. ED
	DWG NO. A-001.00
	SCALE: AS NOTED
	FILE: CONDOCS.DWG



LOFFREDO BROOKS ARCHITECTS P.C.
 118 WEST 22ND STREET - 4TH FLOOR
 NEW YORK CITY, NEW YORK 10011
 TEL 212.679.7729 FAX 212.725.8914
 E.MAIL INFO@LBARCH.COM

NOTES



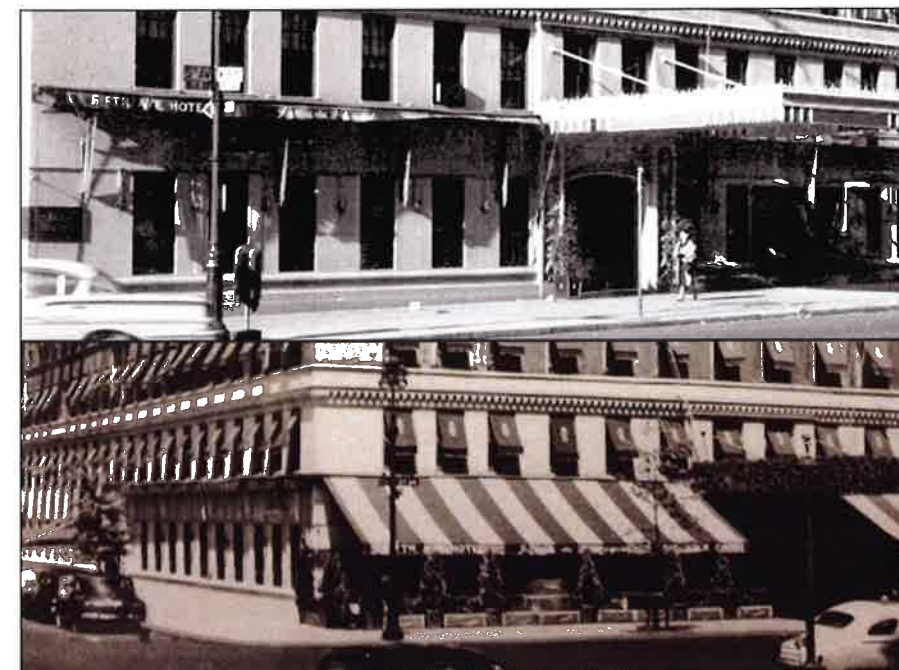
HISTORICAL PHOTO EXISTING FACADE

1 SCALE: NTS



HISTORICAL PHOTO EXISTING FACADE

2 SCALE: NTS



HISTORICAL PHOTO EXISTING FACADE

3 SCALE: NTS

NO.	DATE	ISSUE/REVISION	BY
	11.25.15	REVISED LANDMARKS DRAWINGS	CV
	10.22.15	ISSUE FOR LANDMARKS FILING	CV
	08.06.15	ISSUE FOR FILING & LANDLORD REVIEW	CV
JOB TITLE			
FORBES BUSINESS CENTER			
24 FIFTH AVENUE			
PARTIAL GROUND FLOOR			
NEW YORK, NY 10011			
DRAWING TITLE			
EXISTING FACADE			
SEAL & SIGNATURE		PROJ NO.	5045.00
		DRAWN BY	RG/NS
		CHECKED BY	ED
		PROJ MGR.	ED
		DWG NO.	A-002.00
		SCALE: AS NOTED	
		FILE: CONDOCS.DWG	2 OF 3

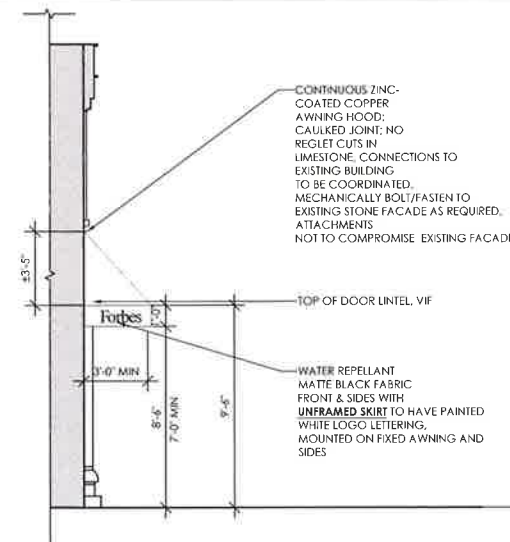


LOFFREDO BROOKS ARCHITECTS P.C.
 118 WEST 22ND STREET - 4TH FLOOR
 NEW YORK CITY, NEW YORK 10011
 TEL 212.679.7729 FAX 212.725.8914
 E.MAIL INFO@LBARCH.COM

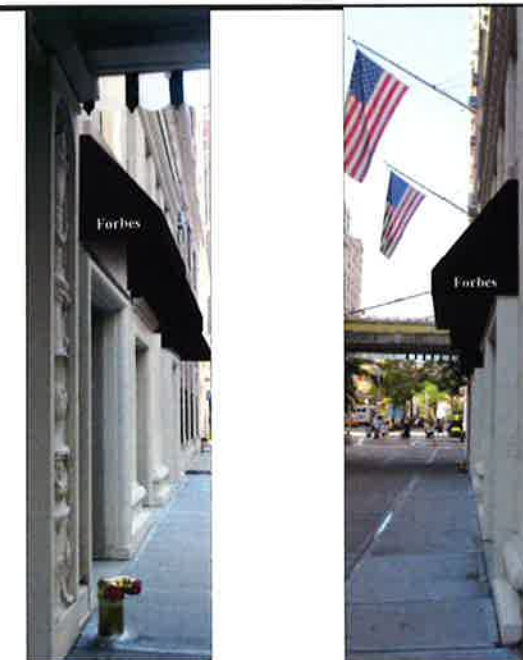
NOTES



1 PROPOSED FACADE FRONT ELEVATION
 SCALE: 1/4" = 1'-0"



2 PROPOSED FACADE SIDE ELEVATION
 SCALE: 1/4" = 1'-0"



3 PROPOSED RENDERED SIDE ELEVATIONS
 SCALE: NTS



4 PROPOSED RENDERED FACADE FRONT ELEVATION
 SCALE: NTS



WALL SURFACE MOUNTED SCONCE,
 SPEC: WORLD IMPORTS, REVERE 3-LIGHT
 OUTDOOR WALL LANTERN #61313-06,
 FINISH: FLEMISH [06] LAMP: LED B10 7W
 (60W EQUIVALENT) CANDELABRA, 2700K,
 FLAME TIP, CLEAR FINISH.



WATER REPELLANT MATTE BLACK FABRIC:
 SUNBRELLA 'BLACK' (4608)

NO.	DATE	ISSUE/REVISION	BY
1	11.25.15	REVISED LANDMARKS DRAWINGS	CV
2	10.22.15	ISSUE FOR LANDMARKS FILING	CV
3	08.06.15	ISSUE FOR FILING & LANDLORD REVIEW	CV

JOB TITLE FORBES BUSINESS CENTER
 24 FIFTH AVENUE
 PARTIAL GROUND FLOOR
 NEW YORK, NY 10011

DRAWING TITLE PROPOSED FACADE

SEAL & SIGNATURE	PROJ NO. 5045.00
	DRAWN BY RG/NS
	CHECKED BY ED
	PROJ MGR ED
	DWG NO. A-003.00
	SCALE: AS NOTED
	FILE: CONDOCS.DWG